

## Anti-IL-22RA hIgG1 Antibody (280.346.TSY)

### Product information

|                 |        |
|-----------------|--------|
| GM-88095AB-10   | 10 µg  |
| GM-88095AB-100  | 100 µg |
| GM-88095AB-1000 | 1 mg   |

### Antibody Information

|                    |  |
|--------------------|--|
| Species Reactivity | Human; Mouse; Cynomolgus   |
| Clone              | 280.346.TSY  |
| Source/Isotype     | Monoclonal Human IgG1 kappa  |
| Application        | Flow Cytometry; Block assay; Bioactivity-ELISA   |
| Target             | Detects IL-22RA  |
| Gene               | IL-22RA(Q8N6P7-1)  |
| Background         | IL-22ra (Interleukin-22 Receptor a) is a cell surface Receptor that mainly binds to Interleukin-22(IL-22) ,thus playing an important role in immune response and cell signaling. IL-22 is a cytokine produced by specific T cells, such as Th17 cells and certain types of host immune cells, and is mainly involved in the regulation of inflammatory responses and defense mechanisms in epithelial cells. |
| Storage            | Store at 2-8°C short term (1-2 weeks).Store at ≤ -20°C long term. Avoid repeated freeze-thaw.  |
| Formulation        | Phosphate-buffered solution, pH 7.2-7.4.   |
| Endotoxin          | < 1 EU/mg, determined by LAL gel clotting assay  |

## Data Examples

### Flow cytometry

Mouse\_IL22R HEK-293 Cell Line (Catalog # GM-C41368) was stained with Anti-IL-22RA hlgG1 Antibody (280.346.TSY) (Catalog # GM-88095AB) or isotype control antibody, followed by anti-Human IgG APC-conjugated Secondary Antibody.

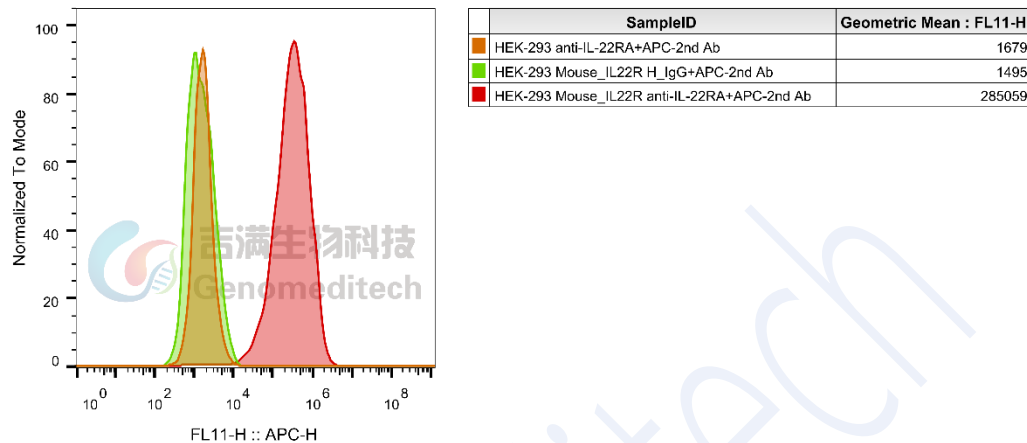


Fig. FACS

### Block assay

The stimulate effect of 40 ng/mL Human IL-22 Protein; His Tag (Catalog # GM-88080RP) for H\_IL22 Reporter 293 Cell Line (Catalog # GM-C19682) was inhibited by increasing concentration of Anti-H\_IL-22R1 hlgG1 Antibody(ARGX-112) (Catalog # GM-46382AB), Anti-IL-22RA hlgG1 Antibody (280.346.TSY) (Catalog # GM-88095AB), and Anti-IL-22RA hlgG1 Reference Antibody (Temtobio) (Catalog # GM-88094MAB).

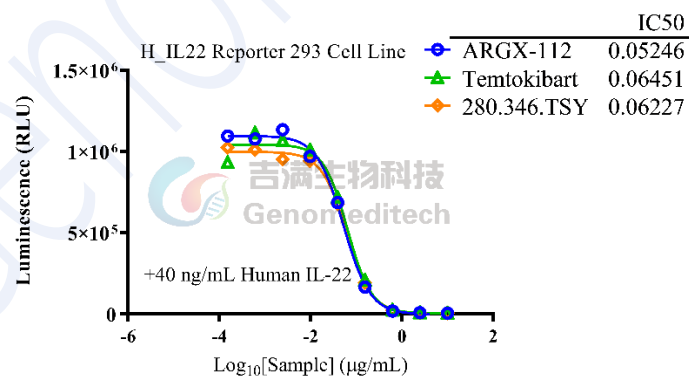


Fig. assay

Bioactivity-ELISA

Mouse IL-22RA1 Protein; His Tag (Catalog # GM-88086RP) was immobilized at 2 µg/ml (100 µL/well). Increasing concentrations of Anti-IL-22RA hIgG1 Antibody (280.346.TSY) (Catalog # GM-88095AB) were added.

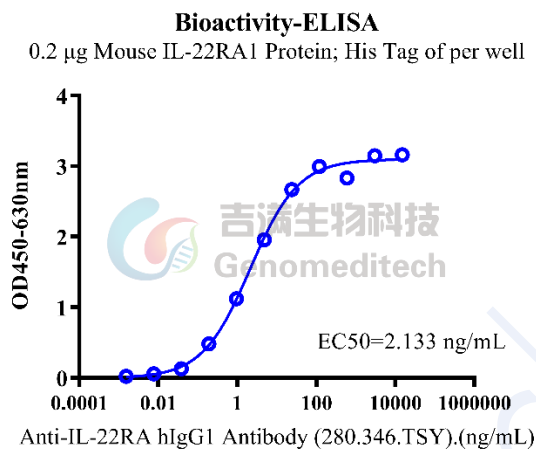


Fig. Assay